

F-1 & F-6



USER MANUAL

F-01 & F-06

Dear User;
Thank you for choosing us.

ATTENTION

- Please install the safebox where you can use it easily.
- The location should be dry. Don't give electricity to the body.
- Do not put under sun shine. Steel body can be so hot.
- Do not remove the screws or uninstall the mechanism.
- Do not use the used and new batteries together. Replace the battery as pack. Use only Alkaline batteries.
- Be sure the batteries are at right position.
- Do not apply voltage over "9V".

TECHNICAL SPECS

Ürün adı : Elektronik Handheld Terminal

Ürün kodu : F-01 & F-06

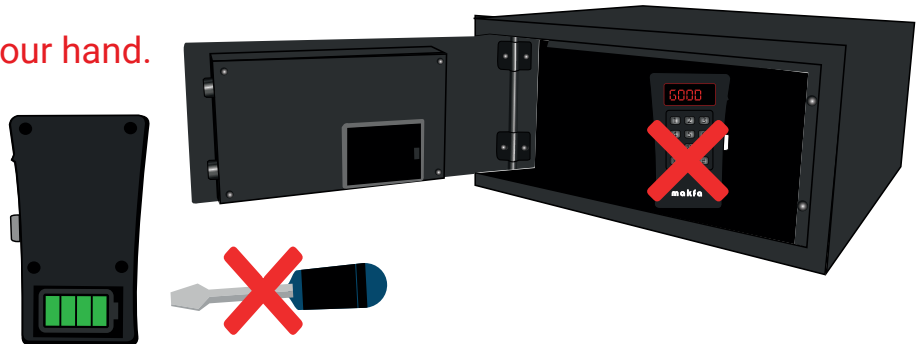
Çalışma voltajı : DC 9V

Kayıt kapasitesi : 105

INSTALLATION

- Please open the battery cover by your hand.
Do not use screw driver etc.

- DO NOT PUT THE
HANDHELD TERMINAL INSIDE !!!



FACTORY SETTINGS



Master Code: 6666 This code should be changed immediately.

Do not forget to note the new master code.

Open-Lock Code: 8888 This code should be changed immediately.

Do not forget to note the new master code.

OPENING WITH SAFE BOX HAND TERMINAL

- First, plug it into the "MINI USB" port of the Handheld Terminal. Plug the other USB end into the USB panel of the case. Power up the Handheld Terminal with the switch on the Right. The text "GOOD" appears on the screen. Press any key on the chassis panel to wake the chassis from sleep mode. Enter the Master code to the Handheld Terminal and press the "#" key. The text "reEAdy" appears on the screen. Enter the Open-Lock code and press the "#" key. "OPEN" will appear on the screen and our safe will open.



CHANGE THE MASTER PASSWORD

- Enter your master password on the Hand Terminal and activate the "#" screen. It says "reEAdy" on the screen. Press the "*" button twice. Writer "Prog" on screen. Enter your master password and press "*1". It says "NEuu_C1" on the screen. not determine. Type your 4-digit password and press "#". Your "donE" operation on the screen is completed.



CHANGE OPEN-LOCK PASSWORD

- Enter your master password on the Hand Terminal and activate it by pressing the "#" key. It says "reEAdy" on the screen. Press the "*" key twice. It says "Prog" on the screen. Enter your master password and press the "*2" key. It reads "NEuu_C2" on the screen. you want to specify. Type your 4-digit password and press the "#" key. Your process is completed when "donE" appears on the screen.



FACTORY RESET PASSWORDS

- Enter your master password on the Hand Terminal and activate it by pressing the "#" key. It says "rEAdy" on the screen. Press the "*" key twice. It says "Prog" on the screen. Press the "6080*0" Key. Your transaction is complete when "rESEt" is written on the screen.



TRANSFERRING SAFE BOX RECORDINGS TO HAND TERMINAL

- Firstly, plug the Handheld Terminal into the "MINI USB" port. Plug the other USB end into the panel of the case. Power up the Handheld Terminal with the switch on the Right. "GOOD" will appear on the screen. Press any key of the chassis panel to exit the chassis sleep mode. Enter the Master code to the Handheld Terminal and press the "#" key. It reads "rEAdy" on the screen. Press the "*" key twice. It says "Prog" on the screen. Press "8668*8" Key. "DONE" appears on the screen and your transaction is completed.



MINI USB



F-01 & F-06

CHANGING THE SYSTEM TIME

- First, plug it into the "MINI USB" port of the Handheld Terminal. Plug the other USB end into the USB panel of the case. Power up the Handheld Terminal with the switch on the Right. "GOOD" will appear on the screen. Press any key on the chassis panel to wake the chassis from sleep mode. Enter the Master code to the Handheld Terminal and press the "#" key. It reads "rEAdy" on the screen. Press the "*" key twice. It says "Prog" on the screen. Press "8668*7" Key. The screen will ask you to enter a 6-digit number.



For example: 2020-03-17, 09:30:56, Enter Numbers in Sequence 20 03 17 then press "#" key. 09 30 56 press the "#" key again. The screen displays "dONE" and your transaction is complete.



HAND TERMINAL TIME SETTING TRUE UP THE SAFE' S TIME

- First, plug it into the "MINI USB" port of the Handheld Terminal. Plug the other USB end into the USB panel of the case. Power up the Handheld Terminal with the switch on the Right. It says "GOOD" on the screen. Press any key on the chassis panel to wake the chassis from sleep mode. Enter the Master code to the Handheld Terminal and press the "#" key. It says "rEAdy" on the screen. Press the "*" key twice. It says "Prog" on the screen. Press the "8090*6" Key. Your transaction is completed when "DONE" appears on the screen.



HAND TERMINAL SERIAL CODE SETTING

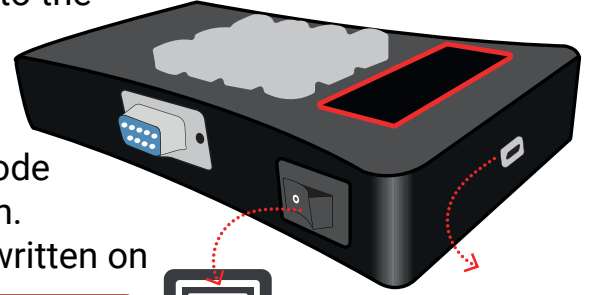
- Power up the Handheld Terminal with the switch on the Right. "GOOD" is written on the screen. Enter the Master code to the Handheld Terminal and press the "#" key. It reads "rEAdy" on the screen. Press the "*" key twice. It says "Prog" on the screen. Press "5665*5" Key. "____" appears on the screen. Enter your safe serial code and press the "#" key. "DONE" is written on the screen and your process is completed.



Serial code of your safe and Handheld Terminal must be the same, otherwise Your Handheld Terminal will not work.

SAFE BOX SERIAL CODE SETTING

- First, plug it into the "MINI USB" port of the Handheld Terminal. Plug the other USB end into the USB panel of the case. Power up the Handheld Terminal with the switch on the Right. It says "GOOD" on the screen. Press any key on the chassis panel to wake the chassis from sleep mode. Enter the Master code to the Handheld Terminal and press the "#" key. It says "rEAdy" on the screen. Press the "*" key twice. It says "Prog" on the screen. Press the "8090*5" Key. It says "Old" on the screen. Enter the old serial code and press the "#" key. "NEww" is written on the screen. Enter the new code and press the "#" key. "DONE" is written on the screen and your process is completed.



MINI USB



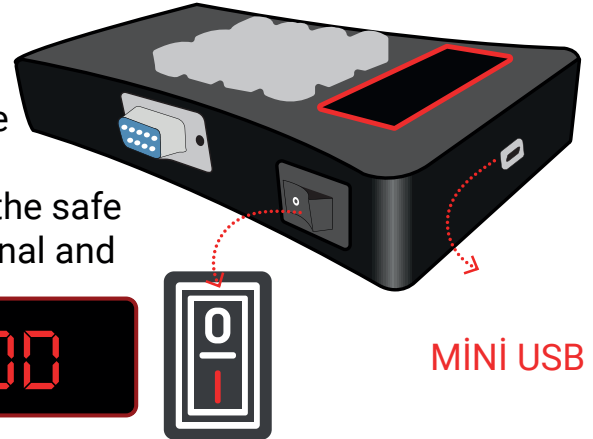
GENEL UYARILAR

- Never leave the Handheld Terminal in the safe.
- Make sure you turn it off with the power button of the Handheld Terminal.
- The serial code of your safe and the Handheld Terminal must be the same, otherwise your Handheld Terminal will not work.
- The factory serial code of the Handheld Terminal and the safe is "0000".



ENABLE THE RENTAL FUNCTION

- First, plug it into the "MINI USB" port of the Handheld Terminal. Plug the other USB end into the USB panel of the case. Power up the Handheld Terminal with the switch on the Right. It says "GOOD" on the screen. To wake the safe from sleep mode, press any key of the safe panel. Enter the Master code into the Handheld Terminal and press the "#" key. It reads "rEAdy" on the screen. Press the "*" key twice. It says "Prog" on the screen. Press the "8090*4" Key. "____" appears on the screen.



MINI USB

Enter the first two digits of the year and the next two digits of the month and press the "#" key. "____" appears on the screen. Enter the first two digits as the day and the next two digits as the hour and press the "#" key. "DONE" is written on the screen and your process is completed.



DISABLED THE RENTAL FUNCTION

- Plug the Handheld Terminal into the "MINI USB" port first. Plug the other USB end into the USB panel of the case. Power up the Handheld Terminal with the switch on the Right. It says "GOOD" on the screen. Press any key on the chassis panel to wake the chassis from sleep mode. Enter the Master code to the Handheld Terminal and press the "#" key. It says "rEAdy" on the screen. Press the "*" key twice. It says "Prog" on the screen. Press the "8090*5" Key. "DONE" is written on the screen and your process is completed.

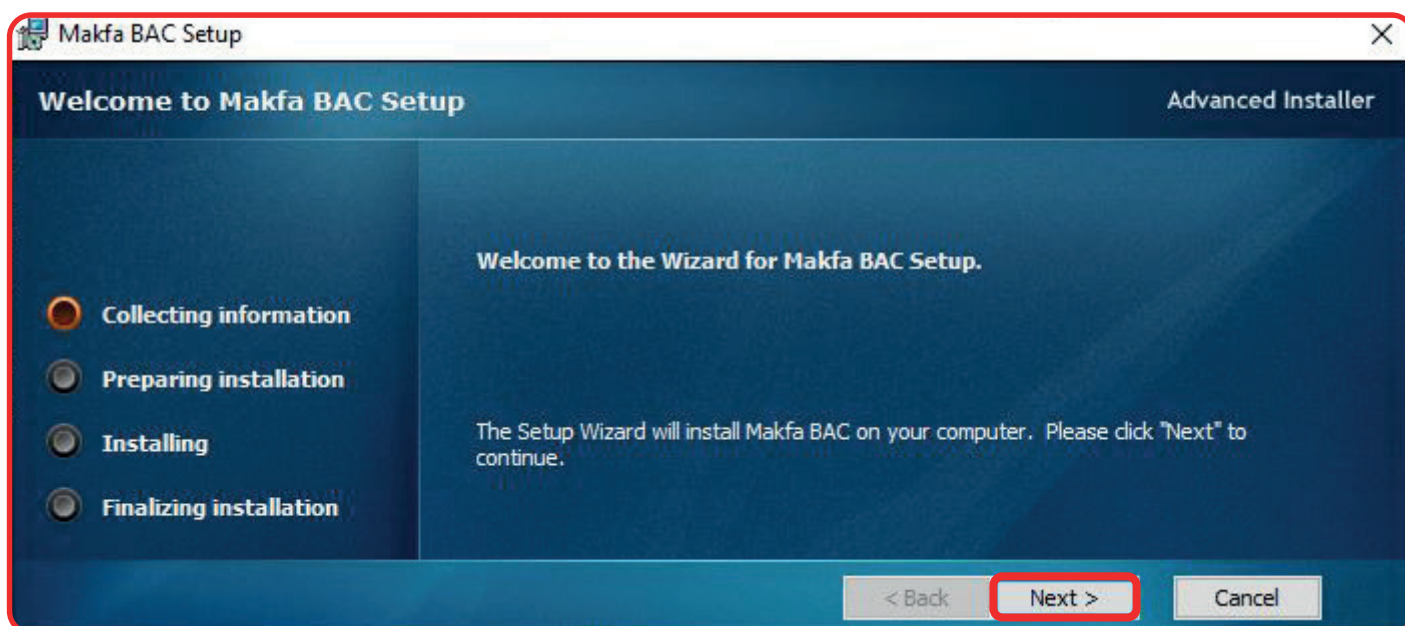


WARNINGS ABOUT RENTAL

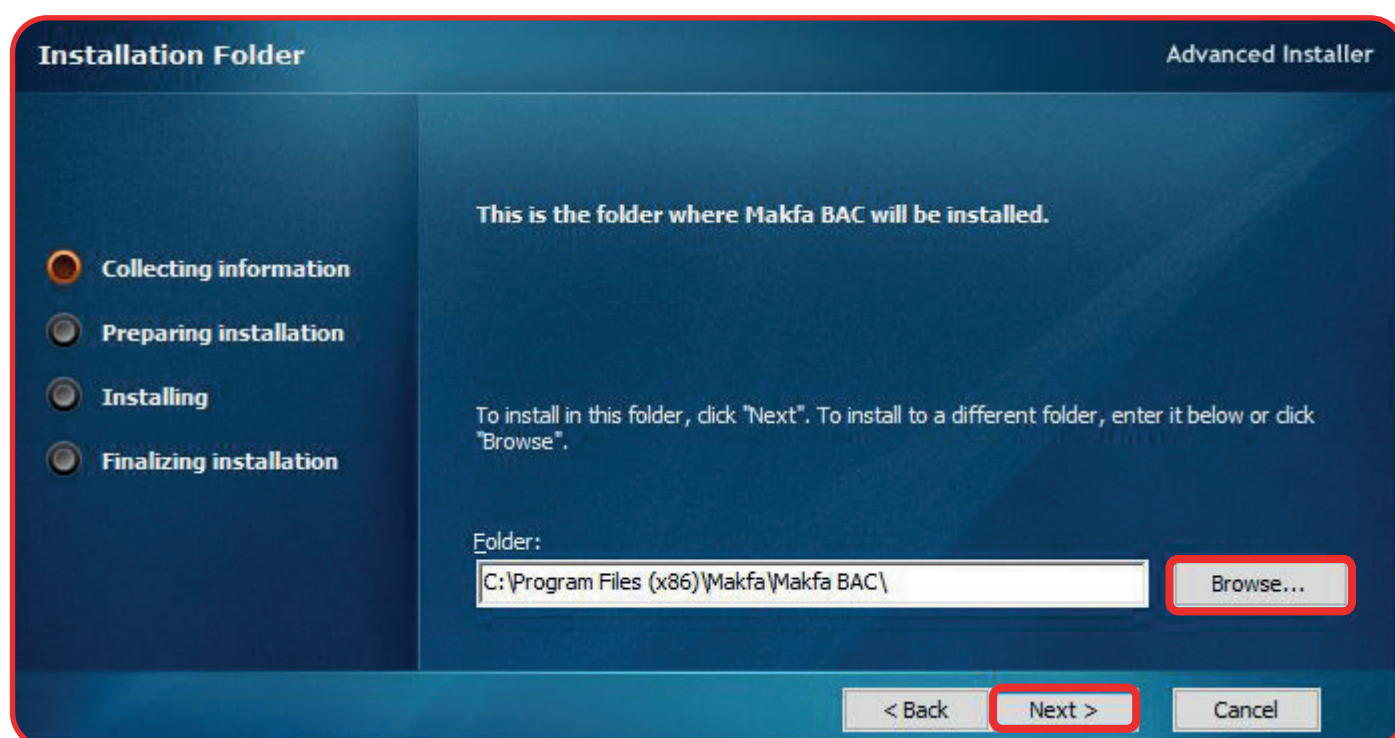
- ! After the safe rental settings expire, the customer cannot open the lock. The safe can be opened with a master code or a hand terminal.

READING OPENING STORIES FROM A COMPUTER

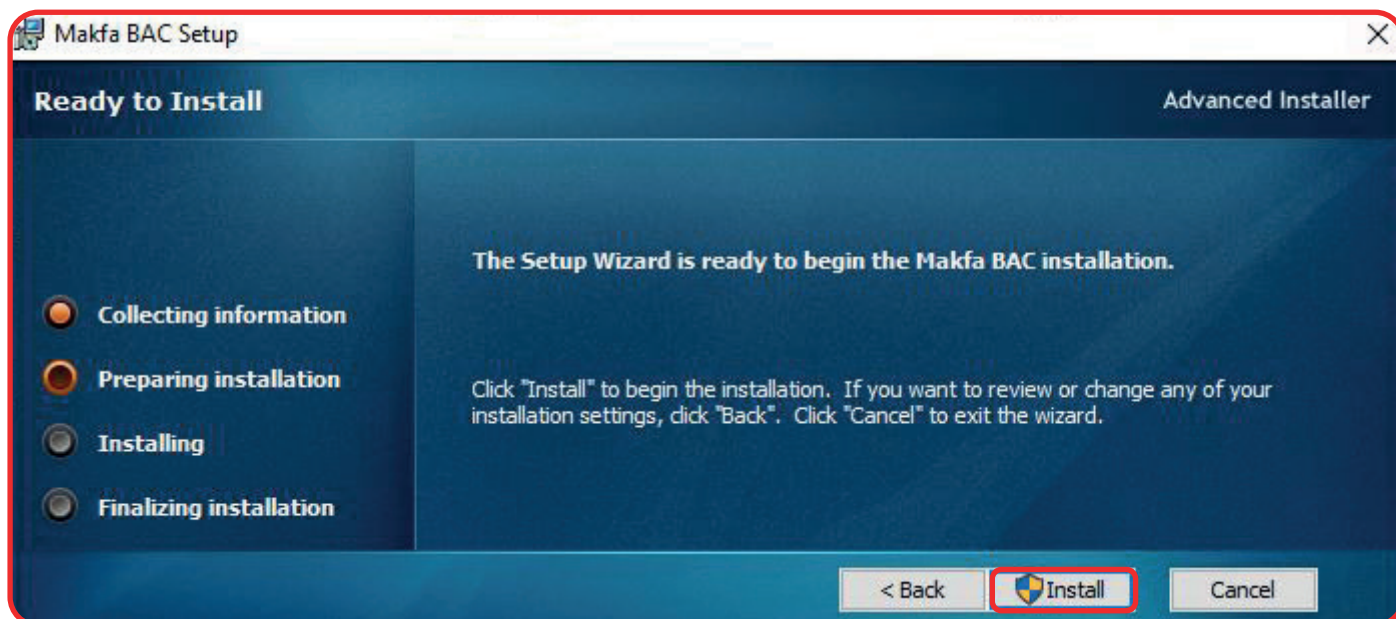
- Run Makfa BAC.msi. Click "Next" on the screen that appears.



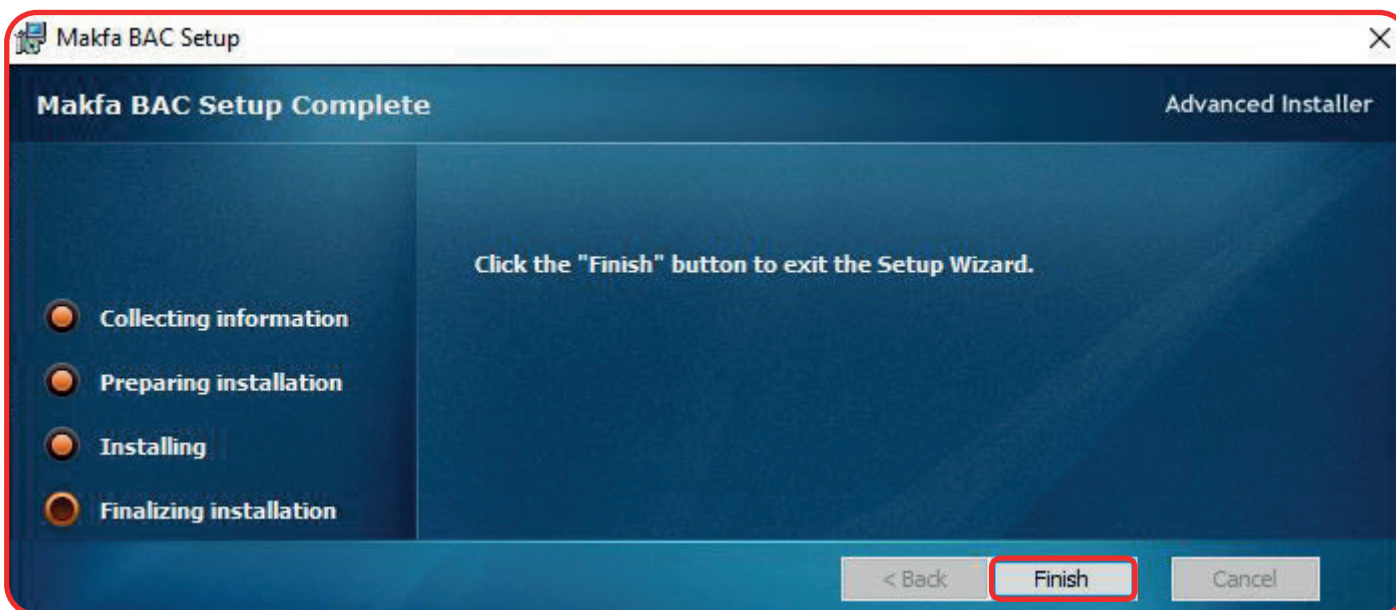
- Select "Browse" and choose where to install, or choose "Next" and continue.



- Select "**Install**" to install.



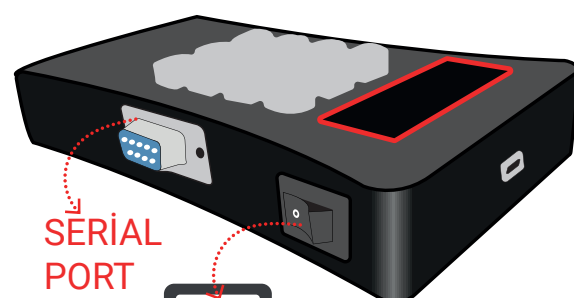
- Select "**Finish**" and complete the installation.



- Plug it into the "**SERIAL PORT**" input to the Hand Terminal first. Plug the serial port end of the cable into the computer. Power up the Handheld Terminal with the switch on the right. It says "**GOOD**" on the screen. Enter the Master code into the Handheld Terminal and press the "**#**" key. "**rEAdy**" appears on the screen.

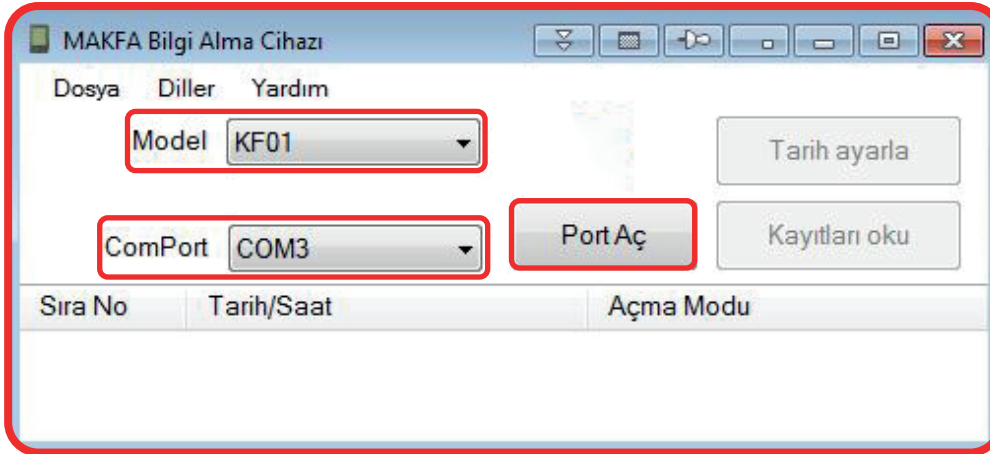
READY

GOOD

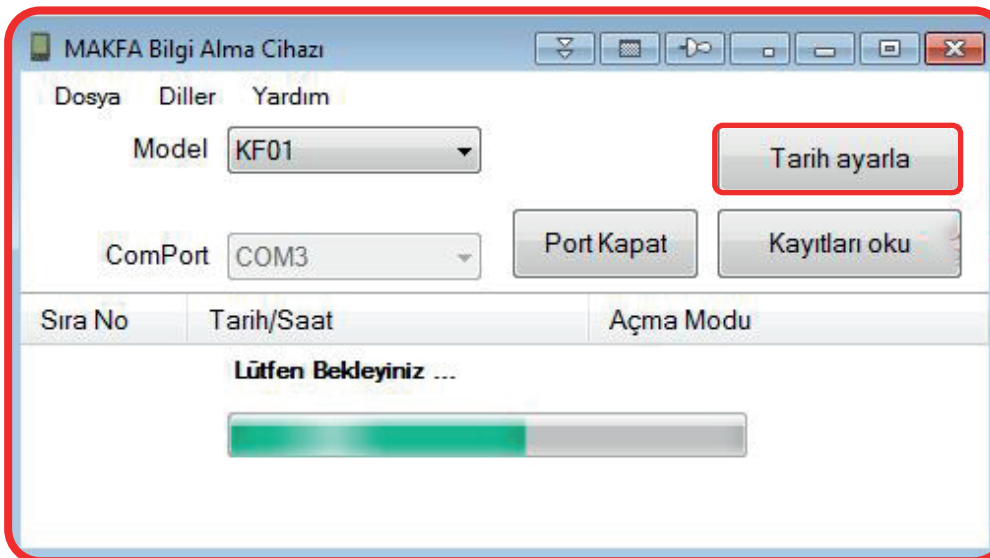


- If your computer does not have a "**Serial Port**" entry, you can use a USB to serial port converter.

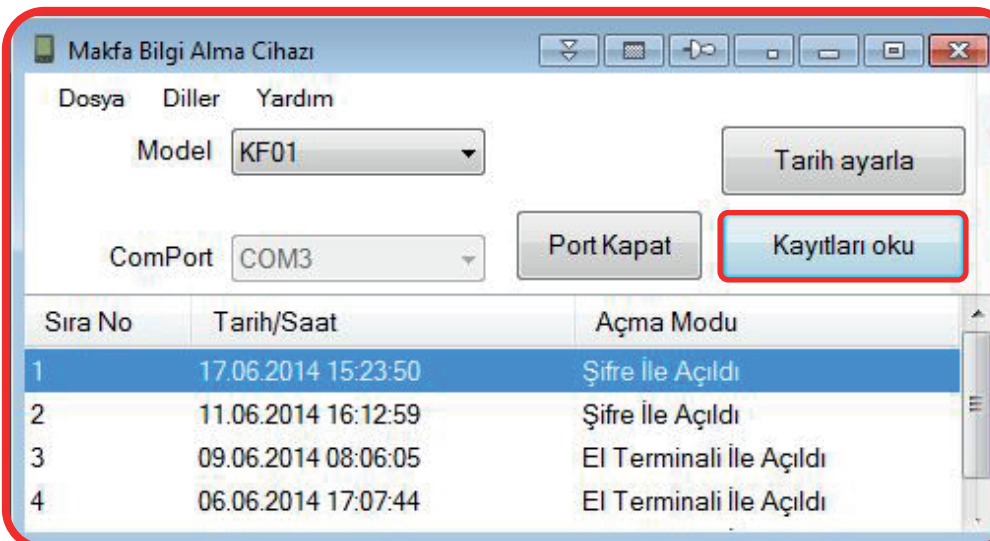
- Run the BAC Log Makfa program. The following screen appears: Select the model of the safe from the Model section. Select "COM" from the Comport section. Click the "Open Port" button.



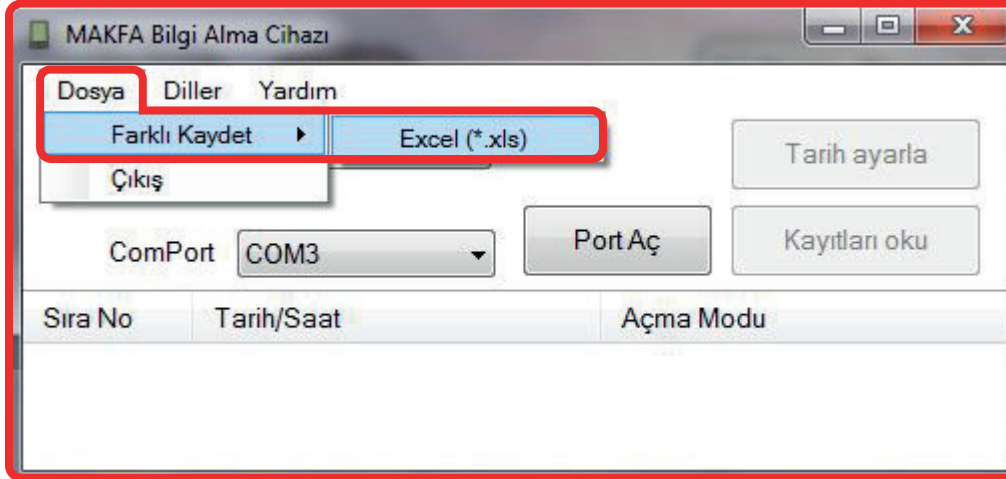
- Click on the "Set Date" button to update the Time and Date information of the Handheld Terminal. When the update is completed, a message stating that Date/Time has been set or Date/Time cannot be set is displayed on the screen.



- When we click on the "Read logs" button, the recorded logs are displayed as a list.



- Go to the "File" tab to save the logs. Click "Save As" and "Excel." Select the location on your computer where you want to save and click the "Save" button.



- BAC Log Makfa program has "Turkish, English, Arabic and Russian" language support.

