

KF-42



USER GUIDE

Dear user;

Thank you for entrusting your valuable belongings to us.

ATTENTION

- Store in a concealed and secure location.
- Ensure that the storage area is cool and dry.
- Do not expose to direct sunlight.
- Do not disassemble or dismantle.
- Do not mix old and new batteries. Replace all batteries at the same time.
Do not use expired batteries and use Alkaline batteries only.
- **Make sure batteries are inserted correctly.**
- **If you forget the safe's password: 1. Open with Master code. 2. Open with hand terminal. 3. Metal key is for emergency use only, not for regular use.**
- There is a 'USB' port on the left side of the keypad. Remember that you can optionally use a hand terminal from here to support when the safe's battery is low. Please do not apply voltage over 6V DC to this socket. Refer to "Page 9".
- Do not forget the mechanical key and hand terminal inside the safe.
- Read the "Opening the Safe with Mechanical Key" section before using the mechanical key. Refer to "Page 5".

TECHNICAL SPECS

Item Name : Electronic Digital Motorized Safebox

Item Code : KF-42

Working Voltage : DC 6V

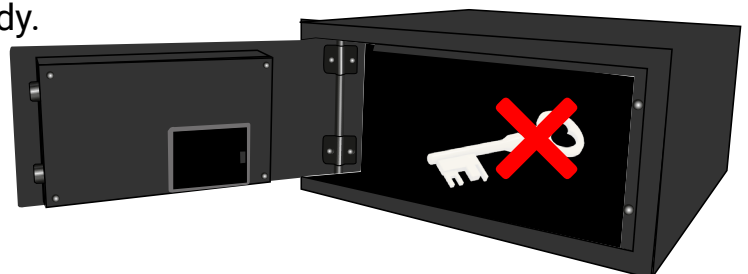
Standby Current : $\leq 10\mu\text{A}$

Working Current : $\leq 400\text{ mA}$

Temp Conditions : $-10^{\circ}\text{C} \sim 65^{\circ}\text{C}$ / $10\% \sim 90\% \pm 2\text{RH}$

INSTALLATION

- After you open the door of the safe , open the cover of the battery box by your hand. Please do not use any metal to open. Insert the batteries correctly and close the cover. If you hear the "beep" sound; Your safe is ready.
- **Please open the battery cover by your hand. Do not use screw driver etc.**
- **DO NOT PUT THE METAL KEY INSIDE !!!**



POSITIONING

Inside the safe, there are 4 holes: 2 at the back and 2 at the bottom. Place the safe in the desired location, then proceed with the assembly using anchors and screws. It's important to mount the safe to a stable and motionless surface. Additionally, ensure that the safe is leveled during installation. This will affect the comfort of opening and closing the door.

FACTORY SETTINGS

The safe doors are shipped in the open position. However, if they are shipped locked, the safes can be locked using the code 123456.



Master Kod : The Master Code is registered as 000000. It is crucial to change this code immediately upon receiving the safe. Please refer to "Page 3" for instructions on changing the code. Since resetting can be challenging, it's important not to forget the new code after changing it. Please see "Page 4" for more information.

LOCKING AND UNLOCKING

- After pushing the safe door closed, enter a code with at least 3 digits but no more than 6 digits, which you will determine. Then press the "LOCK" button. When "CLOSEd" appears on the screen, your safe will be locked.
- Enter the code that you used to lock the safe while the safe is locked. When "OPENEd" appears on the screen, your safe will open.
- If the code you entered is incorrect, you can press the "CLEAR" button to clear the screen.



OPENING THE SAFE DOOR WITH THE MASTER CODE

- While the safe is locked, press the "LOCK" button twice. "SUPER" will appear on the screen. After the "SUPER" message disappears, enter your master code. "OPENED" will appear on the screen and your safe will open.



- Please refer to "Page 2" for the factory master code of the safe.

CHANGING MASTER CODE

- While your safe lock is open, press the "CLEAR" button twice. "PROG" will appear on the screen.
- After the "PROG" message disappears, immediately enter '842627'. Press the "LOCK" button.
- "OLD" will appear on the screen. Enter your master code and press the "LOCK" button.



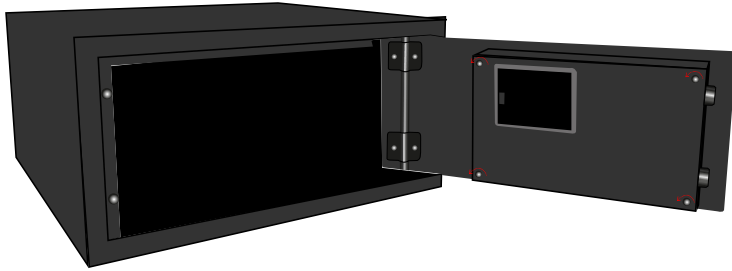
- "NEW" will appear on the screen. Enter your new password and press the "LOCK" button. "GOOD" will appear on the screen and your process will be completed.



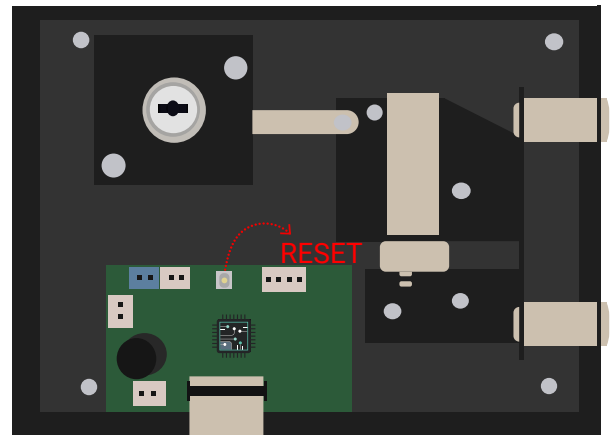
- Since resetting can be challenging, it's important not to forget the new code after changing it. For resetting instructions, please refer to "Page 4".

RESET TO FACTORY DEFAULT MASTER CODE

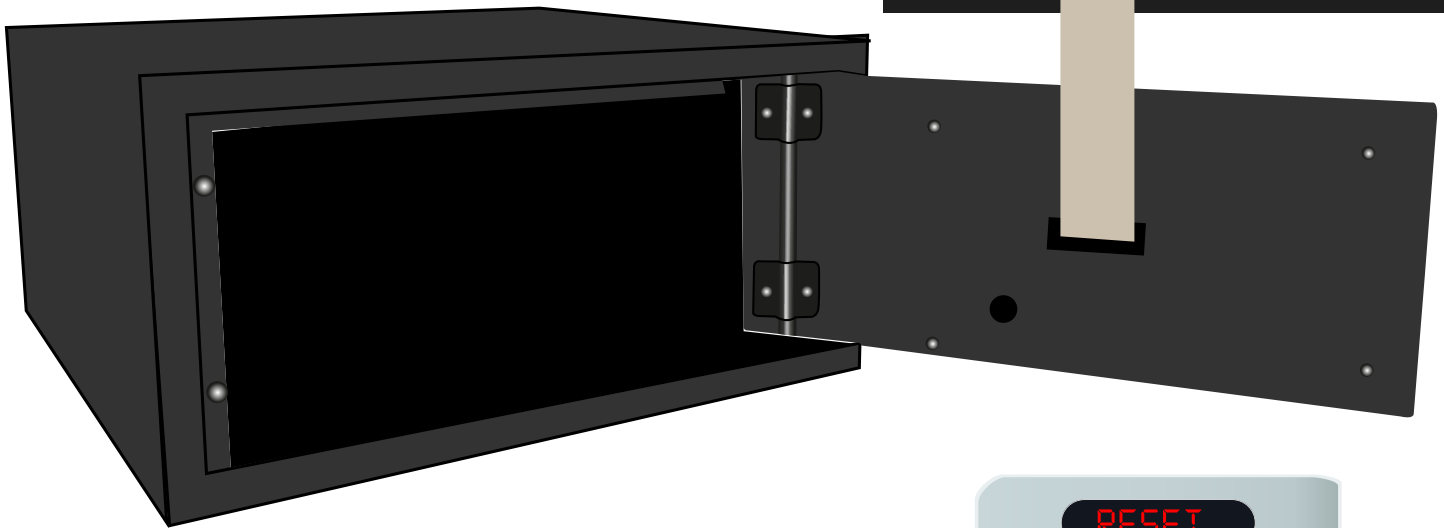
- Unlock the safe door using the user code or the hand terminal.
- Do not perform the reset operation using the mechanical key, as this may result in the product displaying an 'E-BAR' error and becoming unusable, which could void the warranty



- Remove the four screws located on the back of the panel.



- Remove the lock mechanism carefully, ensuring not to damage the cables, until the "RESET" button is visible.
- Press the "RESET" button.



- "RESET" will appear on the panel, and your master code will revert to the factory settings.



- Performing this procedure may cause damage to the circuit and void the warranty. Therefore, remember your master code to avoid any issues.

OPENING THE SAFE WITH MECHANICAL KEY



- The mechanical key is only for emergency situations. It is not suitable for regular use.
- You cannot lock an open safe with the mechanical key!!!
- If you do not know the user and master codes, and you do not have the hand terminal, or if the safe's battery is depleted, use the mechanical key.
- Carefully remove the cover of the mechanical key.
- Insert your mechanical key into the barrel.
- Turn your mechanical key towards the direction of the hinge. Your safe will open.
- After your safe is opened, please do not force the key; it will not come out. PLEASE DO NOT FORCE IT
- If your safe's battery is depleted, please replace it with new alkaline batteries.
- If you do not know your master code, refer to 'Page 4' for resetting the master code to factory defaults.
- If you know your master code, lock your safe by turning the key in the opposite direction of the hinge. Remove your key.
- Unlock your safe using the user code, master code, or hand terminal to open the safe
- Do not open or close the safe using the hand terminal or the panel while the mechanical key is inserted. Your safe may receive an 'E-bar' error and malfunction



- After opening your safe with the mechanical key, the key will not come out. PLEASE DO NOT FORCE IT. Remove the key after locking your safe.
- Do not open or close the safe using the hand terminal or the panel while the mechanical key is inserted.
- Do not leave the mechanical key inside the safe!!!

CHANGING SYSTEM TIME

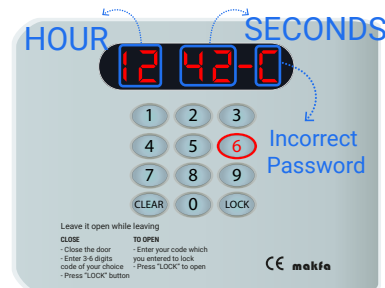
- With the cash register lock open, press the "Clear" button twice. The display will show "PROG." Once the "Prog" text disappears, enter "055261" and press the "LOCK" button. The display will show "DATE."
- Immediately after, you need to input a 6-digit date:
- Enter the last two digits of the year in the first and second positions.
- Enter the two-digit month in the third and fourth positions.
- Enter the two-digit day in the fifth and sixth positions.
- Press the "LOCK" button.
- You then need to input a 6-digit time:
- Enter the two-digit hour in the first and second positions.
- Enter the two-digit minute in the third and fourth positions.
- Enter the two-digit second in the fifth and sixth positions.
- Press the "LOCK" button. The display will show "GOOD," indicating that your date and time have been set.



- For example, to set the date and time to 2020-03-30, 13:14:15, follow these steps:
- Enter the numbers in sequence: 20 03 30, then press the "LOCK" button.
- Enter 13 14 15, then press the "LOCK" button again.
- The display will show "GOOD," confirming that your date and time have been set.
- If you have a handheld terminal, note that this process can be easier with it. Refer to the handheld terminal user manual for instructions on setting the time using the handheld terminal.

TO CHECK THE OPENING RECORDS

- While the cash register lock is open, first press the "Clear" button twice. The display will show "PROG." After the "Prog" text disappears, enter "162550" and press the "LOCK" button. The display will show "RECORD."
- The first 6 digits represent the date screen, showing the last opening date.
- Press "8" to go to the next record.
- Press "2" to go to the previous record.
- Press "5" to return to the last opening record.
- Press "6" to view the time and opening records.
- Press "4" to view the date screen.
- While in the time and opening menu, the first and second digits represent the hour, the third and fourth digits represent the minute, and the following digit indicates the opening status of the safe box register
- "C": Indicates an incorrect password.
- "A": Indicates the Safe box register lock is locked.
- "1": Indicates the safe box register lock is opened with the user password.
- "2": Indicates the safe box register lock is opened with the Master Password.
- "21 TO 35": Indicates the lock is opened using the "open-lock" password with the handheld terminal "CEU."
- "4": Indicates the lock is opened with the mechanical key.
- Press the "CLEAR" button to exit this menu. The display will show "GOOD" and exit from the opening records.
- A total of "200" opening records are available. You can check the opening records using a computer via the handheld terminal.



14 19-A → SAFE BOX LOCKED

14 19-1 → Guest Code

14 19-2 → MASTER Code

14 19-21 → OPEN-LOCK CODE USED WITH HANDHELD TERMINAL 01

14 19-35 → OPEN-LOCK CODE USED WITH HANDHELD TERMINAL 15

14 19-4 → MECHANICAL KEY



PARAMETER SETTINGS

- While the safe box is open, first press the 'Clear' button twice. The display will show 'PROG.' After the 'Prog' text disappears, enter '711469' and press the 'LOCK' button. The display will show 'CODE.' After a brief wait, the 6-digit parameter menu will appear.



1. If you want the password to be visible when entering numbers while the safe box is open, set it to '1.' Set to '0' if you do not want it to be visible.

2. If you want the password to be visible when entering numbers while the safe box is locked, set it to '1.' Set to '0' if you do not want it to be visible.

3. Set it to '1' to show or hide the password when pressing the clear button while entering the password. Set to '0' to disable this feature.

4. Set to '1' to view 200 opening records. Set to '0' to disable this feature.

5. Set to '1' to lock your old password with the lock button. Set to '2' to disable this feature. It is recommended to use '2' in hotel applications.

6. Set it to '1' to activate the parameter setting menu. Set to '0' to disable the parameter setting menu. If disabled, you can re-enable it by entering your master password while the safe box is locked.



- Refer to the **"OPENING THE SAFE BOX WITH THE MASTER PASSWORD"** section on 'page 3' for details.

- Enter the parameters for the standard settings of the safe box as shown in the image. Press the 'LOCK' button to proceed to the next settings.

7. Sets the number of times an incorrect password can be entered. The standard setting is 4 times. Enter a number between '1' and '9'.

8. Sets the number of digits for passwords. Enter a number between '3' and '7'. Entering '7' recognizes both 3 and 6-digit passwords.

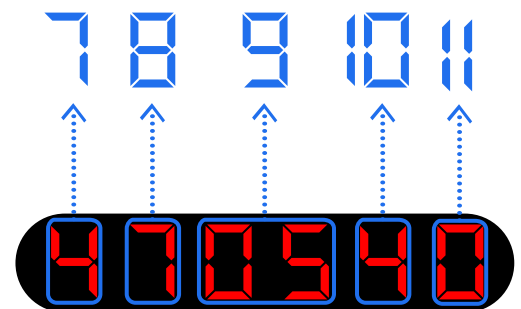
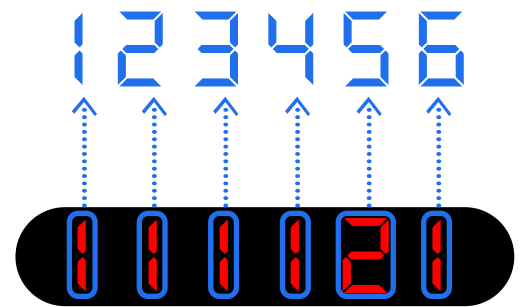
9. Sets the lockout time in minutes. Enter a number between '00' and '99'. When an incorrect password is entered, the safe box locks itself for the entered number of minutes.

10. Sets the safe box password settings. Enter '0' to disable the master password. Enter '1' to use the master password. Enter '4' to use both the master and user passwords. Enter '4' for hotel use.

11. Enter '1' to use the rental feature, enter '0' to disable it.

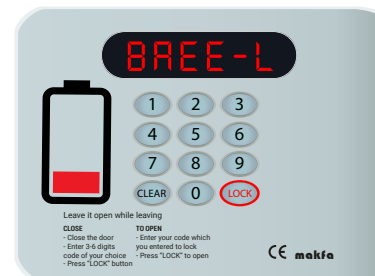
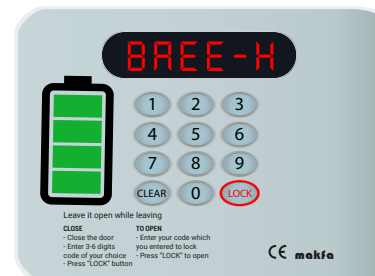
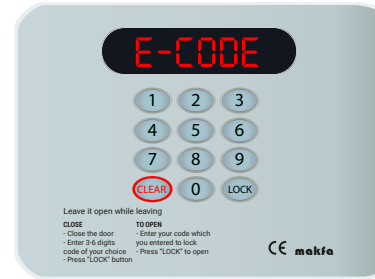
Enter the parameters for the standard settings of the safe box as shown in the image.

- Press the 'LOCK' button to save the settings. The display will show 'GOOD,' indicating that the parameter settings have been saved."



OTHER FEATURES

- When you enter the wrong number, press the "CLEAR" button to delete the entered number.
- If you enter the user password incorrectly, "E-CODE" will appear on the screen.
- If you enter the wrong code, "ERROR" will appear on the screen.
- If the user password is entered incorrectly 4 times, the screen will display "HOLD05." You can enter your password again after 5 minutes. This time decreases automatically.
- Pressing the "CLEAR" button without entering a number hides the numbers. Pressing the "CLEAR" button again without entering a number makes the numbers visible.
- When the safe box is locked and in sleep mode, check the battery status by pressing the "LOCK" button. If the battery is in good condition, "BAEE-H" will appear. If the battery is low, it will appear as "BAEE-L."
- If only "BAEE-L" appears on the screen while in operation, be careful with the polarity and replace the batteries with alkaline batteries.
- If you do not replace the batteries, you may need to power the device with a handheld terminal.



HANDHELD TERMINAL

- If you forget the user and master passwords, you can use a handheld terminal to open the safe box.
- You can transfer the opening records to the handheld terminal and view them through computer software. This allows you to see the date, time, and the method used to open the safe box. You can also save these records to your computer using software.
- When the safe box's battery is depleted, you can provide power with a handheld terminal.
- You can easily adjust the time of the safe box using the handheld terminal.
- If you have a handheld terminal, refer to the user manual to learn how to use it effectively.



GENERAL WARNINGS

- Never leave the mechanical key or handheld terminal inside the safe box.
- The mechanical key is not suitable for regular use. However, in emergency situations where you do not know the user or master password, and you do not have access to a handheld terminal due to a depleted battery, you can open the safe box using the mechanical key.
- Before opening the safe box with the mechanical key, refer to the 'OPENING THE SAFE BOX WITH THE MECHANICAL KEY' section on 'Page 5.' If your product displays an 'E-BAR' error, it becomes unusable. In this case, your safe box may be voided of warranty. The safe box can be opened with the metal key, but it cannot be locked. The metal key is only for emergency situations and is not suitable for regular use.
- Do not lock or unlock the safe box using the panel or handheld terminal while the mechanical key is on the safe box.
- The clock of the safe box must be set. If the clock of the safe box is not set, the timestamps in the opening records will be incorrect. Refer to the 'CHANGING THE SYSTEM TIME' section on 'Page 6' to set the clock of the safe box.
- The master password of the safe box should be changed for security reasons and not forgotten. Refer to the 'CHANGING THE MASTER PASSWORD' section on 'Page 3' to change it. If the master password is forgotten, refer to the 'RESET TO FACTORY DEFAULT MASTER CODE' section on 'Page 4.' Be aware that tampering with the system during this process may void your warranty.
- The safe box key should not be lost. If lost, a replacement cannot be requested from our company. For security reasons, key codes are not recorded.

